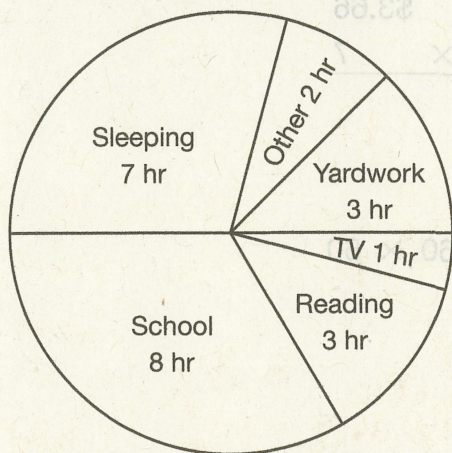


Also take **Power-Up Test 21**

Use the information given in the circle graph to answer problems **1–4**.

**How Holly Spent Her Day**



**1.** What is the total number of hours shown in the graph?  
(Inv. 6)

**2.** What fraction of Holly's day was spent sleeping?  
(Inv. 6)

**3.** If Holly starts school at 8:00 a.m., what time does school end?  
(Inv. 6)

**4.** How many hours did Holly spend at school and reading?  
(Inv. 6)

Use the information given below to answer problems **5** and **6**.

Lars has 6 dogs. Each dog eats  $\frac{2}{3}$  can of food each day. Dog food costs 96¢ per can.

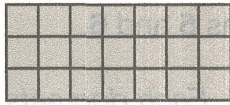
**5.** How many cans of dog food are eaten each day?  
(57)

**6.** How much does Lars spend on dog food per day?  
(57)

**7.** If the perimeter of a square is 88 centimeters, how long is each side of the square?  
(Inv. 2)

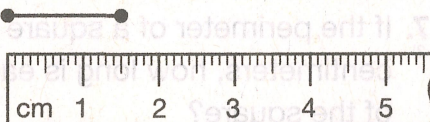
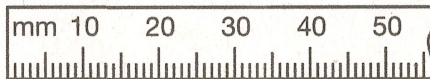
**8.** Change the improper fraction  $\frac{9}{4}$  to a mixed number.  
(104)

9. What fraction name for 1 is shown by this rectangle?  
(103)



10. Miriam bought three audiocassette tapes for \$5.21 each. The sales tax was \$1.17. She paid the clerk with a twenty-dollar bill. How much change should Miriam get back?  
(83)

11. a. What is the length of the line segment in millimeters?  
(102)  
b. What is the length of the segment in centimeters?



12. The freight train traveled 312 miles in 6 hours.  
(57, 60)  
a. The train's average rate was how many miles per hour?  
b. At that rate, how far could the train go in 10 hours?

13. \$52.00  
(41)  
- \$13.46

14. \$3.66  
(58)  
× 7

15. 60 × 60  
(86)

16. 46 × 92  
(90)

17. 10  $\overline{)426}$   
(105)

18. 630 ÷ 3<sup>2</sup>  
(62, 80)

19. 4.5 - (3.4 + 0.27)  
(45, 91)

20. Find the missing number: 697  
(16)  
- p  
302

