

## Structures and Functions Practice (Demo Version)

Read each question carefully.

- 1) The roots of plants take in nutrients and water.

What body part takes in nutrients and water for animals?

- A) feet
  - B) mouth
  - C) skin
  - D) stomach
- 

- 2) Which statement best compares muscles and nerves?

- A) Muscles help move the body, while nerves deliver blood throughout the body.
  - B) Muscles help hold the bones together, while nerves help make new bones.
  - C) Muscles help move the body, while nerves send information through the body.
  - D) Muscles help hold the bones together, while nerves exchange gases in the body.
-

## Structures and Functions Practice (Demo Version)

---

3) Which structure best helps mammals regulate their body temperatures?

- A) claws
  - B) tails
  - C) sweat glands
  - D) neocortex
- 

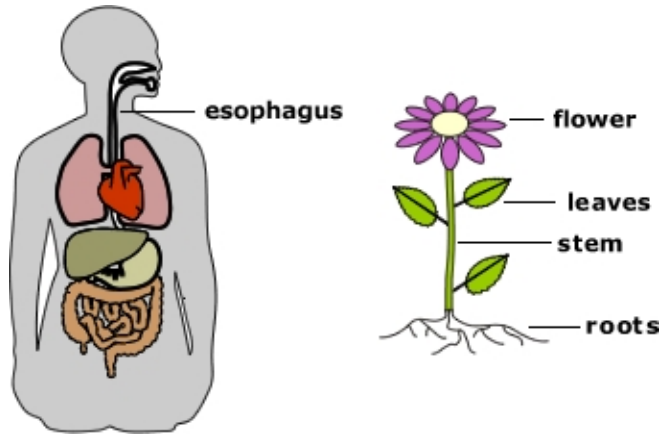
4) Which statement best compares the leaves of plants and the noses of animals?

- A) Both protect the organism from harm.
  - B) Both help control body temperature.
  - C) Both allow the organism to take in nutrients.
  - D) Both exchange gases with the environment.
-

## Structures and Functions Practice (Demo Version)

- 5) The picture below shows a plant and a human. The esophagus helps humans transport nutrients and water through their digestive systems.

Which part of the plant transports nutrients and water?



- A) flower
- B) stem
- C) roots
- D) leaves
- 
- 6) Which statement best compares the circulatory system and the respiratory system?
- A) The circulatory system transports nutrients and water, while the respiratory system takes in nutrients and water.
- B) The circulatory system takes in nutrients and water, while the respiratory system transports nutrients and water throughout the body.
- C) The circulatory system transports nutrients and water, while the respiratory system exchanges gases with the environment.
- D) The circulatory system takes in nutrients and water, while the respiratory system supports the body by helping it stay upright.
-

## **Structures and Functions Practice (Demo Version)**